



# TOWN OF PRINCETON

## Office of the Selectboard

6 Town Hall Drive  
Princeton, MA 01541  
(978) 464-2102 Phone (978) 464-2106 Fax  
[www.town.princeton.ma.us](http://www.town.princeton.ma.us)

Karen G. Cruise, Chair  
Robert Cumming, Vice Chair  
Philip Gott, Clerk  
[selectmen@town.princeton.ma.us](mailto:selectmen@town.princeton.ma.us)

Sherry A. Patch  
Town Administrator  
[townadministrator@town.princeton.ma.us](mailto:townadministrator@town.princeton.ma.us)

### TOWN OF PRINCETON

#### NOTICE OF A PUBLIC HEARING

#### NATIONAL GRID & VERIZON NEW ENGLAND, INC.

#### POLE PETITION NO 30866724

On Petition of National Grid and Verizon New England, Inc the Princeton Selectboard will conduct a Public Hearing on Wednesday, February 21, 2024 at 3PM at the Town Hall Annex, 4 Town Hall Drive, Princeton , MA 01541 for permission to locate poles, wires, fixtures, including the necessary, sustaining and protecting fixtures, along and across the following public way:

**Petition No. 30866724 dated January 10, 2024**

**Mountain Rd-National Grid to install on JO Pole on Mountain Rd beginning at a point approximately 250 feet southwest of the centerline of the intersection of Mile Hill Road and Mountain Rd.**

Also, for permission to lay and maintain underground laterals, cables, and wires in the above or intersecting public ways for the purpose of making connections with such poles and buildings as each of said petitioners may desire for distributing purposes.

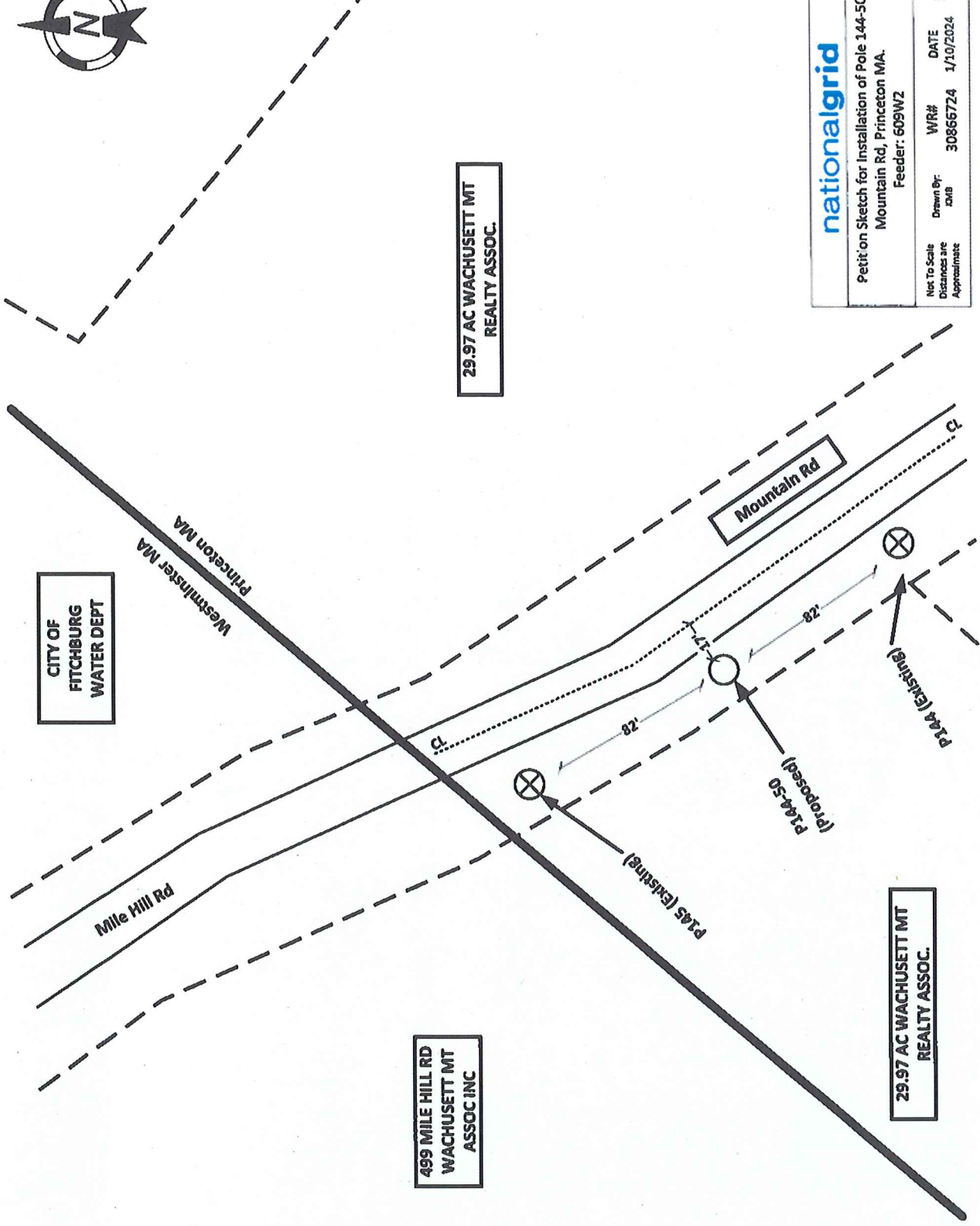
Interested parties are encouraged to attend. This meeting is being held in person and virtually. A copy of the meeting link can be found on the town website.

Karen G. Cruise, Chair  
Princeton Selectboard



**Petition Sketch**  
 Mountain Rd  
 Town of Princeton  
 Worcester County

Legend	
	Proposed JO Pole
	Existing JO Pole
	Center Line
	Street
	Property Line
	Town Line



**nationalgrid**  
 Petition Sketch for Installation of Pole 144-50  
 Mountain Rd, Princeton MA.  
 Feeder: 609W2

Not To Scale  
 Distances are  
 Approximate

Drawn By: JWB  
 WR#: 30866724  
 DATE: 1/10/2024

The exact location of said facilities to be established by and upon the installation and erection of the facilities thereof.