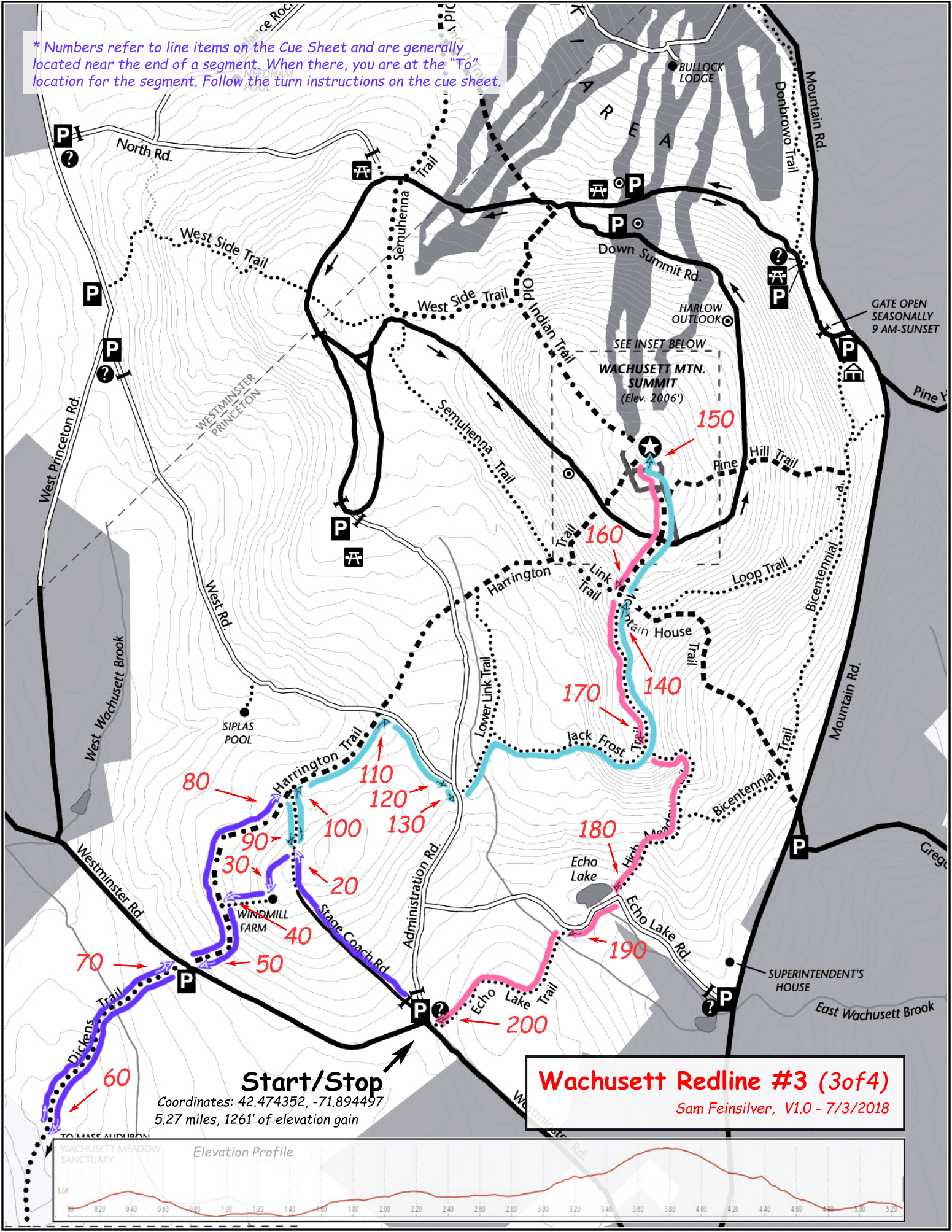


* Numbers refer to line items on the Cue Sheet and are generally located near the end of a segment. When there, you are at the "To" location for the segment. Follow the turn instructions on the cue sheet.



Start/Stop

Coordinates: 42.474352, -71.894497
5.27 miles, 1261' of elevation gain

Wachusett Redline #3 (3of4)

Sam Feinsilver, V1.0 - 7/3/2018

Elevation Profile

