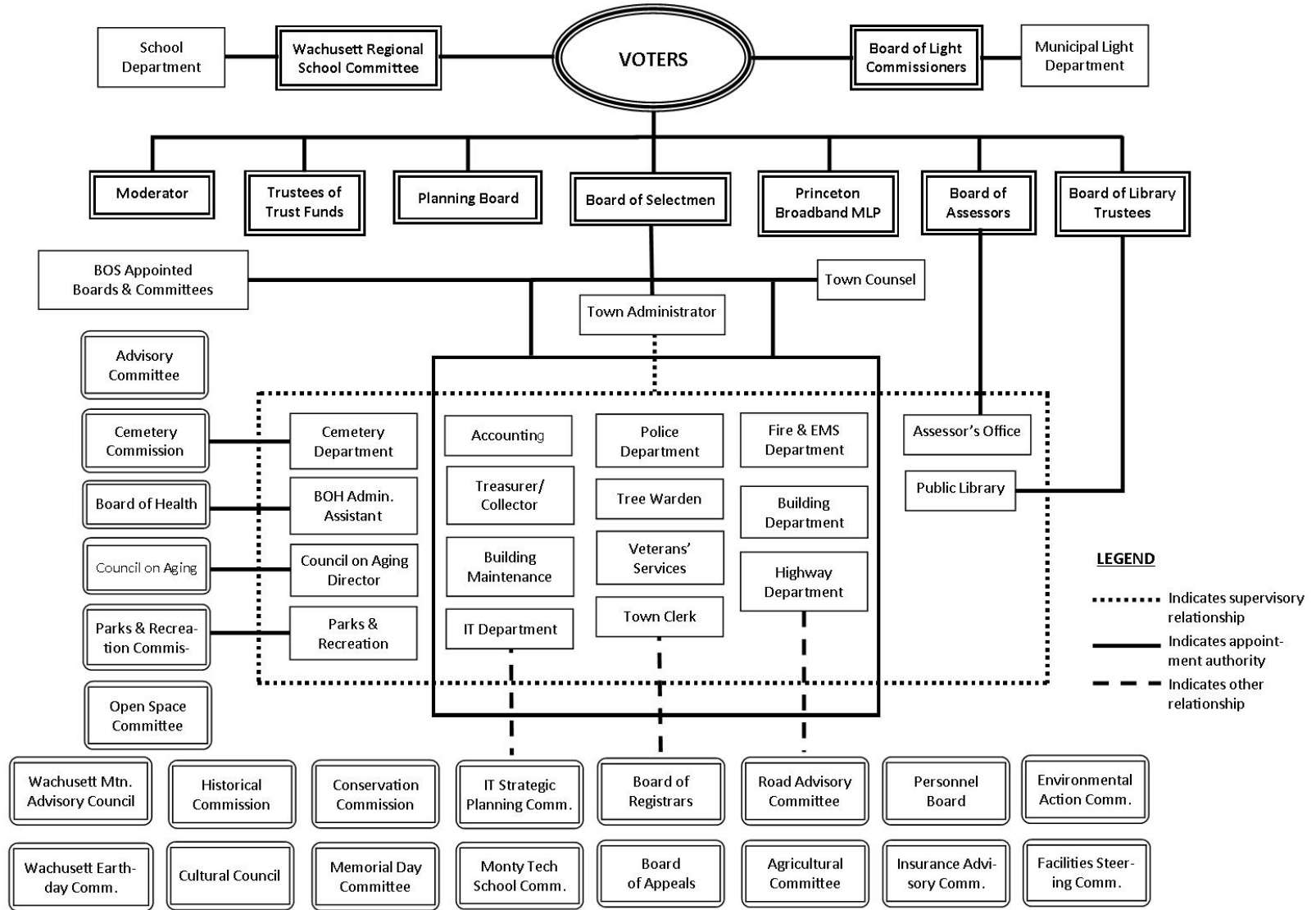


# Town-wide Organizational Chart



Note: Org chart is preliminary. The Board of Selectmen appoints staff as indicated in the chart except the Assistant Treasurer/Collector, who is appointed by the Treasurer/Collector per MGL C41 S39A, S39C and the Plumbing/Gas Inspector, who is appointed by the Building Inspector per MGL C1.42 S11.